

TopSolid'Progress



CAD solution for punching and bending tools

- Quick retrieval of digital data in 3D
- Simulation of unfolding operations, bends and cuts
- Rapid generation of strip images
- Comprehensive library of frames and standard components
- Calculation of punches and dies with tolerances and clearances
- Simulation of tool kinematics
- Creation of drawings and BOMs for tool makers
- Automatic generation of all geometries

The Integrated CAD/CAM Solution

www.topsolid.com

 **Missler**
SOFTWARE

TopSolid'Progress

Designing complete cutting tools in 3D

An efficient CAD solution for cutting and/or sweeping tools should allow strip design by simply inserting and designing stations, and at the same time ensuring complete part associativity. This should be compatible with a powerful CAD/CAM solution like TopSolid. The CAD solution should also be capable of dealing with free-form shapes, in addition to working with mechanics and machining without interrupting the digital process chain. Furthermore, the software needs to provide industry-specific components and processes. TopSolid'Progress meets all these requirements and is therefore the flagship CAD solution for designing cutting tools in 3D.

Data retrieval

- IGES, DXF, Catia, STEP, SAT, Parasolid
- Integrated surface and volume modeler

Recognition of sheet metal parts

- Cleaning of data
- Reliable reconstruction of sheet metal part geometry
- Identification of folds

Part unfolding

- Calculation of deformations
- Taking bend allowances into account

Creation of strips

- Associativity of strips and parts
- Strips for multiple parts
- Simple insertion and/or suppression of stations

Standard and advanced parts library

- Global supplier catalog (Europe, Japan, USA)

Component and process library

- Columns, springs, screws, punches, dies, etc.
- Machining processes (quality, clearances, schedule, ...)
- Easily add customized components

Design with open and closed tools

Control via tool levels

- Automatic classification of components and parts (mold plates, columns, screws, springs, etc.)
- Immediate activation and deactivation of levels

Creation of drawings

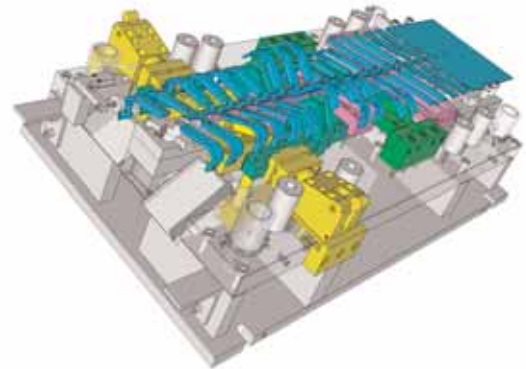
- Dimensions for tool makers, via references

Parts lists

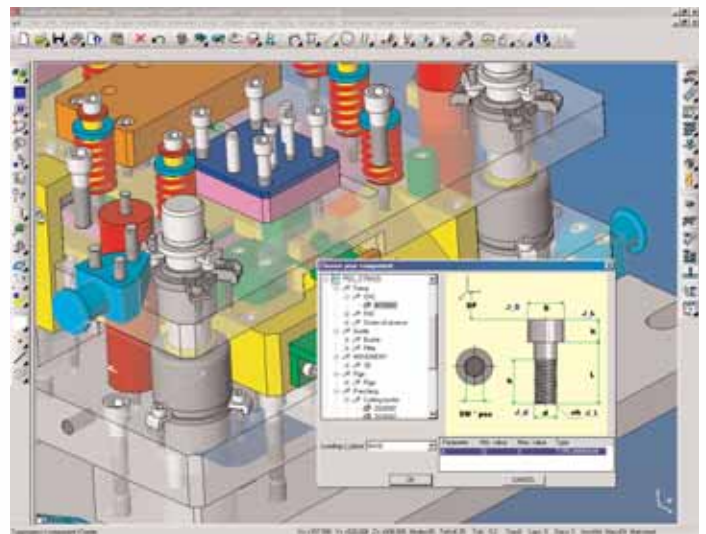
- Parts list references and classification for cutting tool makers

CAD/CAM integration

- TopSolid CAD solution with integrated kinematics
- TopSolid'Electrode CAD solution for electrode design
- TopSolid'Cam (milling) and TopSolid'Wire (wire EDM) CAM solutions
- GOelan CAM solution



Cutting tool: die and strip by Ripoche in France.



TopSolid'Progress incorporates all industry specific components together with assembly procedures and associated machining techniques.

About Missler Software

Missler Software is the second largest French supplier of CAD, CAM, ERP and PDM solutions. The company's product lines include TopSolid, TopManufacturing and GOelan. Missler Software originated from the merger of Missler Informatique, TopCad, Catalpa and CN Industries. As a result, Missler's product portfolio includes comprehensive modern software solutions for the mechanical engineering industry (general mechanical design, special machinery, tooling, boilerwork, ...) and for sheet metal and wood industries. Companies around the world are using TopSolid solutions - the export share of this product line amounts to more than 60%.

Missler Software

7, rue du Bois Sauvage - 91055 Evry, France
Tel: +33 (0)1 60 87 20 20 - Fax: +33 (0)1 60 87 20 18
E-mail: international@topsolid.com