

TopSolid'PDM



Comprehensive management of **technical data**

- Management of drawings in the design department with less paper than ever before
- Easy navigation of technical data
- Simple and secure forwarding of information
- Possibility of integration with production planning and control

The Integrated CAD/CAM Solution

www.topsolid.com

 **Missler**
SOFTWARE

Optimum management of CAD/CAM data

Once again, TopSolid presents itself with familiar and powerful features such as integration of design and manufacturing technologies, specific functions for mechanical engineering, sheet metal and wood processing. Simple and intuitive functions supporting technical product data management for the design and engineering departments form yet another highlight of TopSolid. Management of paper drawings, lost notes and mailings, untraceable parts and the manufacturing of incorrect versions are a thing of the past with TopSolid'PDM. See for yourself!

Navigating projects and data

- Project tree
- Automatic denomination
- Easy search and sorting
- Project monitoring over time and across multiple sites
- Internet and intranet
- Collection and common use of CAD data

Classification and organization of technical data

- BOMs with multiple views
- Continuous and associative management of projects, drawings, title blocks and indices
- Search function for use cases
- Simple definition of requests

Secure archiving

- Check-in and check-out of data
- Private and public workspace

Workflow

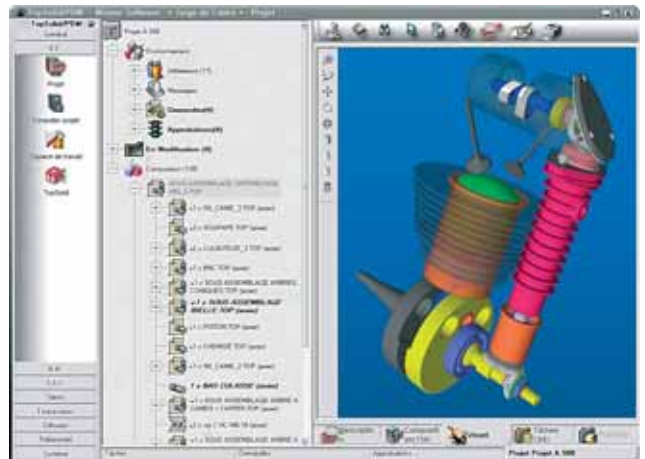
- Management of users and rights
- Support of company-specific processes and best practices
- Configuration as required

State-of-the-art technology

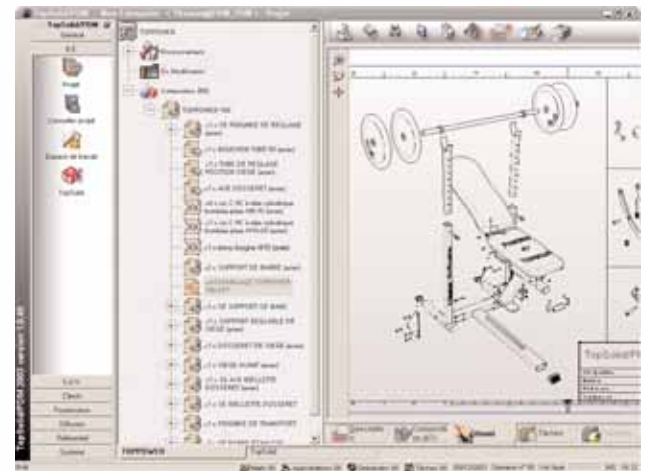
- Oracle and MySQL databases
- Native to Windows and SQL
- VBA macros
- Several languages

Connection with production planning and control

- Part of Missler's integrated CAD/CAM product line
- Utilization of the same database and tables as in TopManufacturing for ERP



TopSolid'PDM is easy-to-use and facilitates navigation of technical company data.



Title block, bill of material and indices are always coherent thanks to TopSolid'PDM. This eliminates the need to re-enter data manually.

About Missler Software

Missler Software is the second largest French supplier of CAD, CAM, ERP and PDM solutions. The company's product lines include TopSolid, TopManufacturing and GOelan. Missler Software originated from the merger of Missler Informatique, TopCad, Catalpa and CN Industries. As a result, Missler's product portfolio includes comprehensive modern software solutions for the mechanical engineering industry (general mechanical design, special machinery, tooling, boilerwork, ...) and for sheet metal and wood industries. Companies around the world are using TopSolid solutions - the export share of this product line amounts to more than 60%.

Missler Software

7, rue du Bois Sauvage - 91055 Evry, France
Tel: +33 (0)1 60 87 20 20 - Fax: +33 (0)1 60 87 20 18
E-mail: international@topsolid.com